

BiGuard SSL VPN Security Gateway Advanced Password Function

How to solve the problem of an expired AD password?

1. Introduction

This function can be used when the following two conditions occur. Be aware that the user needs to change password before logging on to AD domain.

Condition 1: When the user's password of account in AD domain is expired.

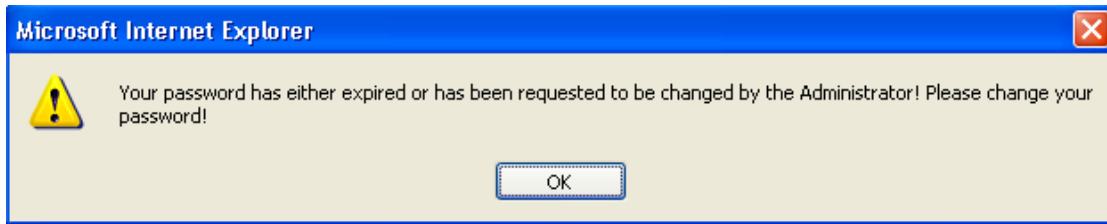
Condition 2: The administrator set the members in AD domain to be in the mode of "User is required to change the password when logging on next time".

2. Setting

2-1 After **AD** is selected in the **Domain** field, enter the User name and Password. Click **Submit**.

The screenshot shows the login interface for the BiGuard SSL VPN Security Gateway. It features a purple header with the BILLION logo. The main content area contains a login form with the following fields: User Name (containing 'test'), Password (masked with dots), and Domain (a dropdown menu showing 'ad'). A red box highlights the 'Submit' button. To the right of the form, there is an illustration of a man in a suit carrying a stack of boxes, with the text 'Three Solutions in ONE' above him. At the bottom right, the text 'BiGuard SSL VPN Security Appliance' is displayed.

2-2 If either one of the above conditions occur, a message box will then pop up, requesting the user to change the password.



2-3 The user enters the password in each field. Click **Apply** to confirm.

Confirm Password: Enter the old password

New Password: Enter the new password

Retype Password: Enter the new password again

A screenshot of a user login form. At the top is a blue header bar. Below it, the text "User Name:" is followed by the input field containing "test". Below that are three password fields, each preceded by a label: "Confirm Password:", "New Password:", and "Retype Password:". Each password field contains a series of dots. At the bottom of the form are two buttons: "Apply" and "Cancel". Below the buttons is another blue bar.

2-4 If the password has been changed successfully, you will see a notification message displayed below:



2-5 Press **OK** to enter the **Portal** page.

BiGuard S10 - SSL VPN Security Gateway



Welcome to SSL VPN Security Gateway, [test](#).

Due to inactivity, your connection will timeout in 5 minutes. [RESET](#)



Network Extender

Click the above Network Extender title to connect to the remote network. Keep your browser open to maintain the connection. If you reload your browser, Network Extender will disconnect and reconnect.



Transport Extender

Click the above Transport Extender title to use the service. It creates an encrypted tunnel to the corporate network, and you can access pre-defined applications as if you were on the corporate network.



Network Place

Click the above Network Place title to use the service. It is similar in style to Microsoft's familiar Network Neighborhood. It allows users to browse network shares, rename, delete, retrieve, and upload files.

###

© Billion Electric Co., Ltd. All rights reserved.

BiGuard User Registration: <http://www.biguard.com/>

Technology Support: support@billion.com

E-mail: sales@billion.com, marketing@billion.com

Billion Global Website: <http://www.billion.com/>