

## BiPAC 2070P



## HomePlug AV 200 Desktop Ethernet Bridge with 12V DC Adapter

### Extend your in-home LAN through existing power lines

Just plug the BiPAC 2070P into any power outlet, and at the same time data signals are transmitted down through the power lines. The BiPAC 2070P can be used to bridge Ethernet devices such as modems, routers, PCs, set-top-boxes, and game consoles, enabling users to share network access via existing in-home power lines. Once plugged into an Ethernet port on a router, the BiPAC 2070P allows people elsewhere in the house to share Internet access by using computers connected with a HomePlug certified Powerline network adapter. Compliant with the latest HomePlug AV standards which supports data speeds of up to 200Mbps, the BiPAC 2070P enables users to easily set up a data network accessible through a power socket and share bandwidth-consuming applications such as video, IPTV and video-on-demand with people all around the house.

### No sweat to set up an in-home Network

The BiPAC 2070P does not require time and money to install expensive Ethernet cables throughout your house in order to share your home network. Nor does it require any drilling. Just one touch on the Network Set-up button to install the bridge utility and your high-speed network is ready. It's as easy as simply plugging in your networking devices using the electrical wiring in your home.

### Smooth Traffic and Prioritization

Quality of Service control guarantees the transmission quality by automatically prioritizing data. The BiPAC 2070P automatically recognizes the bandwidth needs of voice and video applications. QoS prioritizes the data to guarantee optimal results. TV and video images are received and displayed with absolute smoothness. QoS also guarantees clear, instant transmission of voice data, even when other applications are running on the network at the same time. QoS makes your network a pleasure to use.

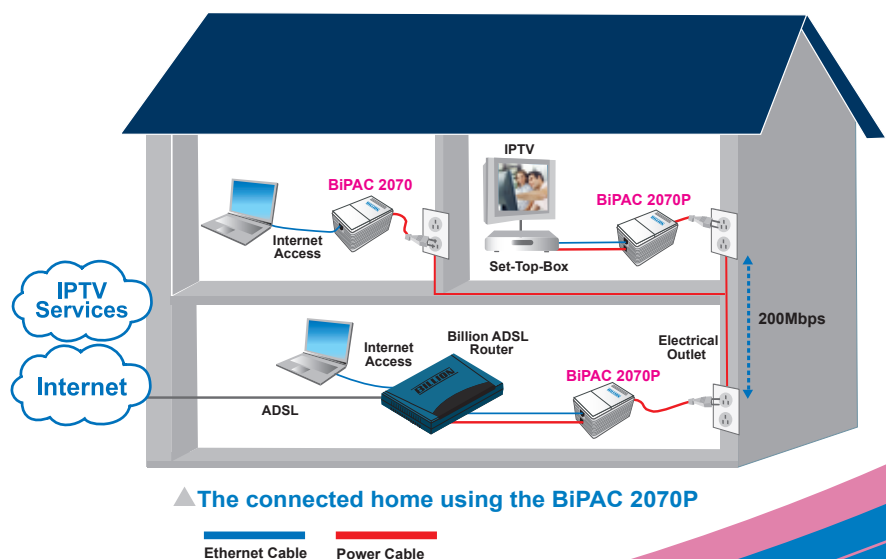
### Immune to Noise and Intervention

Unlike others, the device supports to deliver superior and noise-immune data transmission over in-home power lines through which electricity is carried all around your house. You don't hear any annoying sound generated from transmitting bandwidth-consuming applications like IPTV. Even at the moment when your family turns on an electronic device or turn off a light, the display of latency-sensitive applications such as multimedia or video that you are sharing with your family in the other room will not suddenly break down or freeze a second.

### Companion with Billion Routers

With a built-in 12V DC adapter you can connect the BiPAC 2070P with any Billion ADSL router with power input 12V DC, 1.2A or below, so it saves on the need for an extra power adapter.

- Physical layer data rate of up to 200Mbps over existing in-home power lines
- Utilizes power line technology that takes advantage of the unused bandwidth of the electrical wiring in your home
- Quality of service control
- Supports Triple Play applications such as IPTV, VoIP and high-speed Internet access
- Supports 10/100 BaseT Ethernet
- Compliant with the HomePlug Powerline Alliance Industry specifications
- Integrated DC power jack



## Features & Specifications

### Protocols

- TDMA, CSMA/CA

### Standards

- Ethernet specifications: IEEE 802.3, IEEE 802.3x, IEEE 802.3u, Auto MDI/MDIX
- HomePlug AV compliant

### Transmission Speed

- 200Mbps max.

### Modulation

- Supports OFDM
- 1155 carriers, 1024/256/64/16/8 QAM, QPSK, BPSK and ROBO

### Frequency Range

- 2MHz ~ 30MHz

### Security

- 128-bit AES Link Encryption with key management for secure power line communications
- Encryption:
  - NMK (Network Membership Key) used to authenticate/access
  - Rotating NEK (Network Encryption Key)

### Quality of Service Control

- Enhancements: contention-free access, four-level priority based contention access, and multi segment bursting
- ToS, CoS and IP Port Number Packet Classifiers
- Supports IGMP managed multicast sessions
- IGMP snooping with multicast to multiple unicast support in CSMA
- QoS classification for quasi-error-free delivery
  - VLAN priority field, ToS Field
- Enhanced IPv4/IGMPv1-3 snooping support
- Supports IPv6 and MLDv1-2 snooping

### Supported Operating Systems

- Windows 98 / 98SE / Me / NT / 2000 / XP
- Other 10/100 Base-T Ethernet devices

### Device Port

- Ethernet RJ-45

### Power Supply Specifications

- Input: 100~240V AC, 50~60Hz
- Output: 12V DC, 1.2A
- Protection: OCP, OVP, SCP

### Hardware Specifications

#### Physical Interface

- RJ-45 compatible
- Power DC jack
- Sync button
- Reset button
- Power AC socket
- LED display:
  - Power
  - Ethernet (Link/Act)
  - PLC (Powerline Link/Act)

#### Physical Specifications

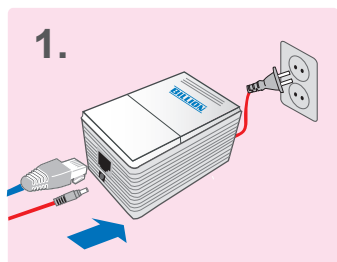
- Dimensions (W, D, H): 2.95" x 4.49" x 2.48"  
(75mm x 114mm x 63mm)

#### Operating Environment

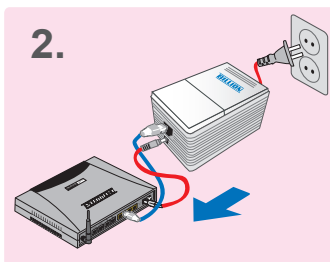
- Operating temperature: 0 ~ 40 °C
- Storage temperature: -20 ~ 70 °C
- Humidity: 20 ~ 95% non-condensing

### Connecting the BiPAC 2070P

Connect a network cable and a power adapter to the bridge, and then plug the BiPAC 2070P into a power outlet



Then connect the BiPAC 2070P by the network cable and the 12DC power cable to a modem, router or a set-top-box



Create a secure network with a simply push off the network set-up button

