

## BiPAC 2073 R2

# Pocket-sized HomePlug AV 200 Wall Plug Ethernet Adapter

### Power Up Your Home Networking!

Transform your home power cables into a high-speed computer network. Compliant with the latest HomePlug AV Standard and with data transmission rate of up to 200Mbps, the BiPAC 2073 R2 is a great networking solution for connecting different devices such as modems, routers, PCs, set-top-boxes, IP Cameras, and game consoles using existing power cables. This allows users to share multimedia applications such as online games, IPTV and audio streaming with family all around the house. Its unique Smart Power Saving technology can automatically detects the link status of connected devices and adjusts its power consumption to enhance power efficiency, thus saving money on electricity bills.

### Energy Efficiency

Due to climate change, Green IT is becoming a big issue in current times. With the Smart Power Saving technology, the BiPAC 2073 R2 can automatically detect its Ethernet connection. When an Ethernet-based device is powered down or disconnected, the BiPAC 2073 R2 adapter will automatically fall into sleep mode, which reduces power consumption significantly. Furthermore, when the current usage is in full operation, the adapter can reduce its power consumption which in turn saves money on your electricity bill. Create a "Green" home with the BiPAC 2073 R2 and become more energy efficient!

### No Extra Wiring Needed to Set Up an In-home Network

With The BiPAC 2073 R2, you can create a network with high-speed bandwidth to connect computers and game consoles without the need for further drilling or extra wires. Just one touch of the "Sync" button to install the bridge utility and your high-speed network is ready. It's as easy as simply plugging in your Billion networking devices and using the power cables in your home.

### Smooth Traffic and Prioritization

Quality of Service (QoS) Control guarantees the transmission quality by automatically prioritizing data. The BiPAC 2073 R2 will automatically recognize the bandwidth needs of voice and video applications. QoS prioritizes the data in order to guarantee optimal transmission quality. TV and video images are received and displayed with absolute smoothness. QoS also guarantees clear and instant transmission of voice data, even when other applications are running on the network at the same time. QoS makes your network a pleasure to use.

### Immunity from Noise and Intervention

Unlike other HomePlug devices, the BiPAC 2073 R2 supports superior and noise-immune data transmission over in-home electrical power lines. Even when your family turns on an electronic device or turns off a light, you won't experience any interruption to latency-sensitive applications such as multimedia or video being shared with your family in another room.



### BiPAC 2073 R2

HomePlug AV 200 Ethernet Starter Kit  
(includes 1 x BiPAC 2073 R2)



### BiPAC P106 R2

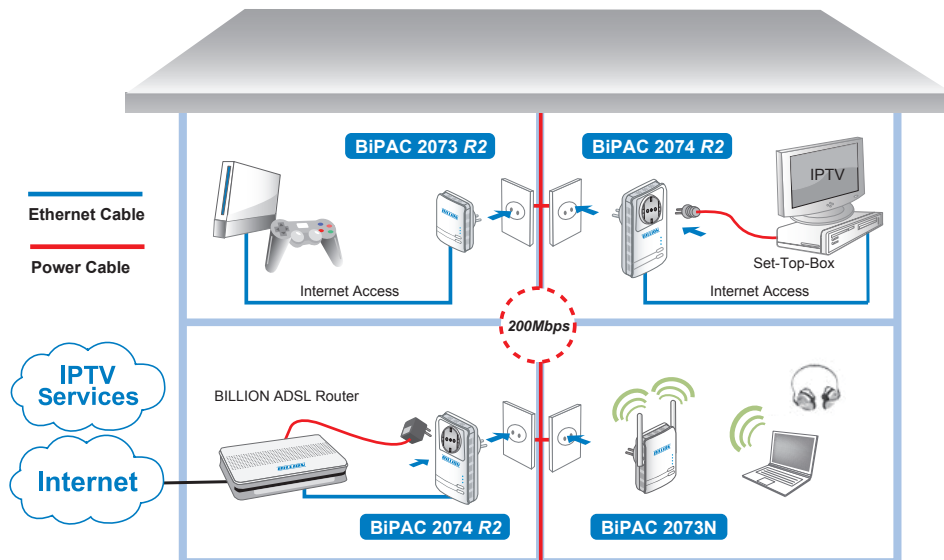
HomePlug AV 200 Ethernet Starter Kit  
(includes 2 x BiPAC 2073 R2)



### BiPAC P106N

Wireless-N HomePlug AV 200 Ethernet  
Starter Kit (includes 1 x BiPAC 2073N  
and 1 x BiPAC 2073 R2)

- Provides high-speed data transfer of up to 200Mbps via electrical wiring
- Enable data transmission through existing home power grid
- Smart Power Saving technology for improved power efficiency
- Utilizes Quality of Service Control
- Supports Triple Play applications such as IPTV, VoIP and high-speed Internet access
- Supports 10/100 Base-T Ethernet
- Compliant with the HomePlug Powerline Alliance industry specifications
- Utmost slim and light design
- Ideal for residential users



▲ The connected home using the BiPAC 2073 R2/BiPAC 2074 R2

## Features & Specifications

### Protocols

- TDMA, CSMA/CA

### Standards

- Ethernet specifications: IEEE 802.3, IEEE 802.3x, IEEE 802.3u, Auto MDI/MDIX
- HomePlug AV compliant

### Transmission Speed

- 200Mbps max

### Modulation

- Supports OFDM
- 1155 carriers, 1024/256/64/16/8 QAM, QPSK, BPSK and ROBO

### Frequency Range

- 2MHz ~ 30MHz

### Security

- 128-bit AES Link Encryption with key management for secure power line communications
- Encryption:
  - NMK (Network Membership Key) used to authenticate/access
- Rotating NEK (Network Encryption Key)

### Quality of Service Control

- Enhancements: contention-free access, four-level priority based contention access, and multi-segment bursting
- ToS, CoS and IP Port Number Packet Classifiers
- Supports IGMP managed multicast sessions
- IGMP snooping with multicast to multiple unicast support in CSMA
- QoS classification for quasi-error-free delivery
  - VLAN priority field, ToS Field
- Enhanced IPv4/IGMPv1-3 snooping support
- Supports IPv6 and MLDv1-2 snooping

### Supported Operating Systems

- Windows 98/98SE/Me/2000/XP/Vista/7
- Other 10/100 Base-T Ethernet devices

### Device Port

- Ethernet RJ-45

### Power Supply Specifications

- Input: 100 ~ 240V AC, 50 ~ 60Hz
- Protection: OCP, OVP, SCP

### Smart Power Saving

- (\*depends on input power voltage)
- Up to 20% power reduction in full operation
- Up to 50% power reduction in standby mode

### Hardware Specifications

#### Physical Interface

- AC power plug
- RJ-45 compatible
- Sync button
- Reset button
- LED display:
  - POWER
  - PLC
  - ETH

#### Physical Specifications

- Dimensions (W, D, H):
  - 3.66" x 2.44" x 1.53"
  - (93mm x 62mm x 38.8mm)

#### Operating Environment

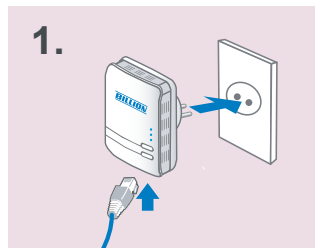
- Operating temperature: 0 ~ 40°C
- Storage temperature: -20 ~ 70°C
- Humidity: 20 ~ 95%, non-condensing

### Available Product Package

- BiPAC 2073 R2
  - HomePlug AV 200 Ethernet Starter Kit
    - includes 1 x BiPAC 2073 R2
- BiPAC P106 R2
  - HomePlug AV 200 Ethernet Starter Kit
    - includes 2 x BiPAC 2073 R2
- BiPAC P106N
  - Wireless-N HomePlug AV 200 Ethernet Starter Kit
    - includes 1 x BiPAC 2073N and 1 x BiPAC 2073 R2

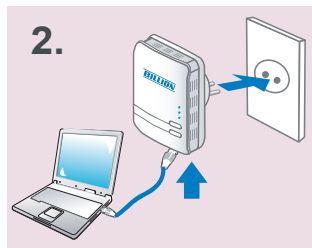
### Connecting the BiPAC 2073 R2

Connect a network cable to the bridge and then plug the BiPAC 2073 R2 into a power socket.



**Note:** Plug/socket, power cable and input voltage/frequency may vary from country to country.

Then connect the BiPAC 2073 R2 to a laptop, modem, router or a set-top-box.



Create a secure network by a simply push off the network sync button.

