



Available product package

**BiPAC P106****HomePlug AV 200 Ethernet Adapter Starter Kit** (includes 2 x BiPAC 2073)**BiPAC P106**

HomePlug AV 200 Wall Plug Ethernet Adapter Starter Kit

Power up your home networking! Just plug the adapter into any wall power socket, connect a network cable and data signals are automatically transmitted through existing in-home power cabling. The BiPAC P106 is a standard product pack including a pair of Wall-Plug type Ethernet Adapters – BiPAC 2073. Compliant with the latest HomePlug AV standards, which support data speeds of up to 200Mbps, the BiPAC 2073 can be used to bridge Ethernet devices such as modems, routers, PCs, set-top-boxes, IP Cameras, and game consoles, enabling users to share multimedia applications such as online games, IPTV and audio streaming with family or friends all around the house. What's unique is that the adapter features Smart Power Saving, which automatically detects the link status of connected devices and adjusts its power consumption thus enhancing power efficiency and saving money on electricity bills.

Energy Efficiency

With the Smart Power Saving feature, the BiPAC 2073 can automatically detect its Ethernet connection. When the Ethernet-based device is powered down or disconnected, the BiPAC 2073 adapter will automatically fall into sleep mode, which reduces power consumption significantly. What's more, when the current usage is in full operation, the adapter can reduce its power consumption and save money on your electricity bill. Create a "Green" home and enjoy energy efficiency!

No extra wiring to set up an in-home network

The BiPAC 2073 does not require the time and money needed to install expensive Ethernet cables throughout your house in order to share your home network. Nor does it require any drilling. Just one touch of the "Sync" button to install the bridge utility and your high-speed network is ready. It's as easy as simply plugging in your networking devices and using the electrical wiring in your home.

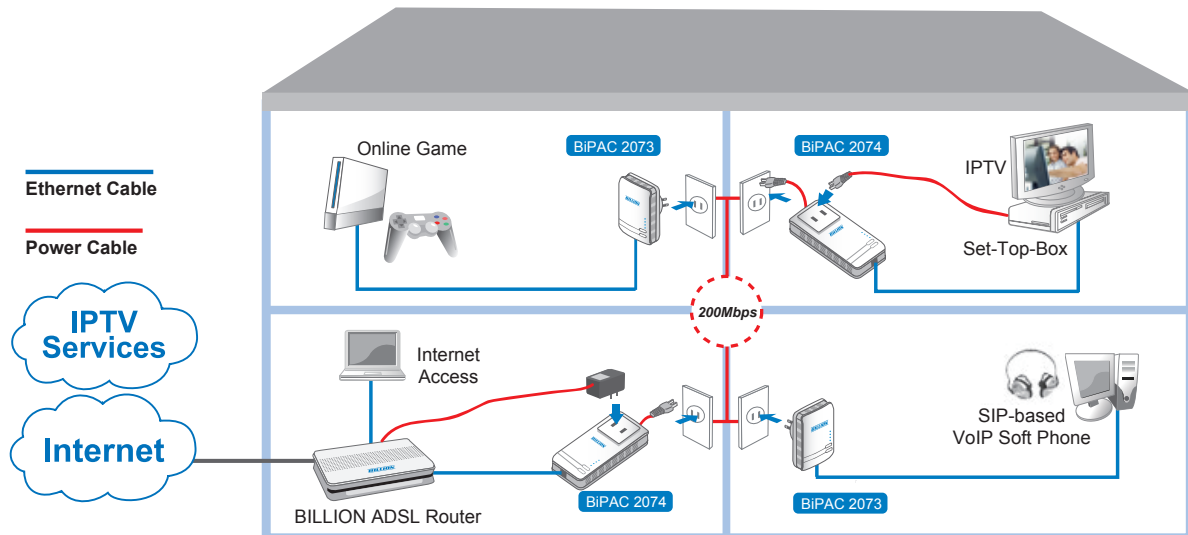
Smooth traffic and prioritization

Quality of Service control guarantees the transmission quality by automatically prioritizing data. The BiPAC 2073 automatically recognizes the bandwidth needs of voice and video applications. QoS prioritizes the data to guarantee optimal transmission quality. TV and video images are received and displayed with absolute smoothness. QoS also guarantees clear, instant transmission of voice data, even when other applications are running on the network at the same time. QoS makes your network a pleasure to use.

Immune to noise and intervention

Unlike others, the device supports superior and noise-immune data transmission over in-home electrical power lines. Even at the moment your family turns on an electronic device or turns off a light, you won't experience any interruption to latency-sensitive applications such as multimedia or video being shared with your family in another room.

- Provides physical layer data rate of up to 200Mbps over existing in-home power lines
- Utilizes power line technology that takes advantage of the unused bandwidth of the electrical wiring in your home
- Smart power saving technology for improved power efficiency
- Utilizes Quality of Service control
- Supports Triple Play applications such as IPTV, VoIP and high-speed Internet access
- Supports 10/100 BaseT Ethernet
- Compliant with the HomePlug Powerline Alliance industry specifications
- Ideal for residential users



▲ The connected home using the BiPAC 2073 / BiPAC 2074

Features & Specifications

Protocols

- TDMA, CSMA/CA

Standards

- Ethernet specifications: IEEE 802.3, IEEE 802.3x, IEEE 802.3u, Auto MDI/MDIX
- HomePlug AV compliant

Transmission Speed

- 200Mbps max.

Modulation

- Supports OFDM
- 1155 carriers, 1024/256/64/16/8 QAM, QPSK, BPSK and ROBO

Frequency Range

- 2MHz ~ 30MHz

Security

- 128-bit AES Link Encryption with key management for secure power line communications
- Encryption:
 - NMK (Network Membership Key) used to authenticate/access
 - Rotating NEK (Network Encryption Key)

Quality of Service Control

- Enhancements: contention-free access, four-level priority based contention access, and multi segment bursting
- ToS, CoS and IP Port Number Packet Classifiers
- Supports IGMP managed multicast sessions
- IGMP snooping with multicast to multiple unicast support in CSMA
- QoS classification for quasi-error-free delivery
 - VLAN priority field, ToS Field
- Enhanced IPv4/IGMPv1-3 snooping support
- Supports IPv6 and MLDv1-2 snooping

Supported Operating Systems

- Windows 98 / 98SE / Me / 2000 / XP / Vista
- Other 10/100 Base-T Ethernet devices

Device Port

- Ethernet RJ-45

Power Supply Specifications

- Input: 100~240V AC, 50~60Hz
- Protection: OCP, OVP, SCP

Power Saving

(* depends on input power voltage)

- Up to 20% power reduction in full operation
- Up to 50% power reduction in standby mode

Hardware Specifications

Physical Interface

- AC power cable
- RJ-45 compatible
- Sync button
- Reset button
- LED display:
 - 1.0 DET
 - POWER
 - PLC
 - ETH

Physical Specifications

- Dimensions (W, D, H): 4.42" x 3.05" x 1.75" (112.4mm x 77.4mm x 44.5mm)

Operating Environment

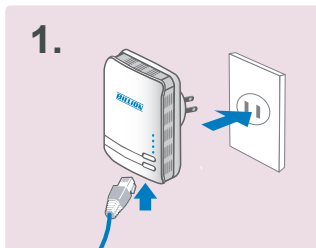
- Operating temperature: 0 ~ 40 °C
- Storage temperature: -20 ~ 70 °C
- Humidity: 20 ~ 95% non-condensing

Available Product Package

- BiPAC P106 HomePlug AV 200 Wall Plug Starter Kit
 - includes 2 x BiPAC 2073

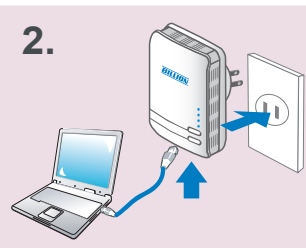
Connecting the BiPAC 2073

Connect a network cable to the bridge and then plug the BiPAC 2073 into a power socket.



Note: Plug/socket, power cable and input voltage/frequency may vary from country to country.

Then connect the BiPAC 2073 to a laptop, modem, router or a set-top-box.



Create a secure network by a simply push off the network sync button.

